

Aquastop 120

High adhesion, alkali-resistant, NBR, elastic waterproof tape for perimeter and fractionizing-expansion joints in Kerakoll's Laminati systems, prior to laying ceramic tiles, porcelain tiles and stone materials with gel adhesives.

Practical and fast to apply with Nanoflex No Limits and all Aquastop waterproofing products, Aquastop 120 guarantees continuous waterproofing even at movement joints, thus ensuring watertightness and long-term durability.



1. High elasticity
2. For internal and external use
3. Ideal for bonding with Nanoflex No Limits gel-membrane, Nanodefense Eco and all Aquastop waterproofing products in Kerakoll's Laminati systems
4. Guaranteed waterproofing of all types of non-structural fractionizing and connection joints
5. Central core in breathable NBR and resistant to basic environments

Areas of application

→ Use

For internal and external use.

- Waterproofing of fractionizing, expansion and desolidarisation joints on:
- external surfaces (balconies, terraces, flat roofs, swimming pools and external surfaces of any size)
- damp environments (kitchens, shower cabinets, bathrooms, saunas)
- Waterproofing of contacts between the Aquastop Green sheets and the perimeter joints in the Laminato No Crack system.

- Waterproofing of contacts between the Aquastop Fabric sheets in the Laminato Vapor Pro system.

Substrates: see the technical data sheets of the waterproofing products used for bonding.

Do not use for exposed applications; for joints subject to direct sunlight and abrasion; to waterproof structural joints.

Instructions for use

→ Preparation of substrates

See the technical data sheets of the waterproofing products used for bonding.

→ Preparation

The joint is ready-to-use. Directly bond on-site overlapping sections over the special pieces or make special pieces using the waterproofing products chosen for bonding on the substrate.

→ Application

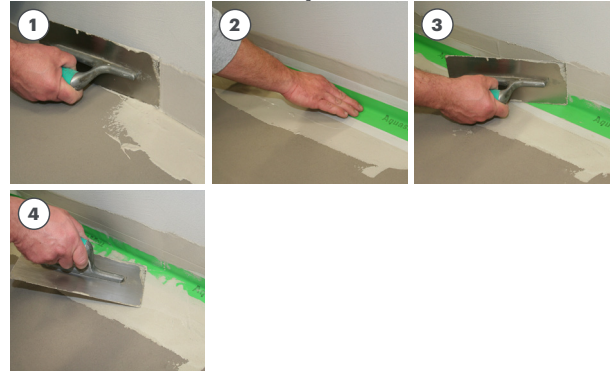
Aquastop 120 can be applied on all movement joints and corners, both horizontal and vertical. Do not use to waterproof structural joints. To bond Aquastop 120, use Nanoflex No Limits or Aquastop waterproofing products for Laminati Kerakoll systems: apply the waterproofing product on the previously prepared substrate using a spreader; lay the tape with the Kerakoll logo facing upwards. Embed the white mesh side strips into the wet waterproofing product and smooth over to ensure maximum adhesion, being careful not to wrinkle the tape. It is recommended to press down the tape from the centre (green strip) towards the outer strips and spread any excess waterproofing product on the white mesh (on the other hand, spreading from the outside towards the inside of the strip could cause the mesh to roll up). The white mesh side strips and the first 5-10 mm of the green tape must be completely covered with waterproofing product; ensure total coverage.

The Aquastop 120 consists of a green central waterproof NBR tape and two white mesh side strips: the tape must be bonded with the centre line at joints and edges or with a maximum gap of 2 cm; bonding the white mesh at joints and edges DOES NOT guarantee the watertightness of the intervention.

The different elements must be connected using the tape, overlapping the edges by at least 40-50 mm and bonding them with the waterproofing product.

Laminato No Limits: bonding the Aquastop 120 tape with the Nanoflex No Limits gel membrane

→ Wall-floor and wall-wall joints and corners



- ① Apply the waterproofing product to an area about 8-10 cm wide near joints, on the floor and on the wall.
- ② Fix Aquastop 120 on the fresh waterproofing product following the wall-floor joint.
- ③ Press down firmly and smooth to ensure total bonding of the tape being careful not to wrinkle it; press from the centre of the tape towards the outside so as not to curl the edges of the mesh strips.
- ④ Ensure total coverage of the white mesh strips with the wet waterproofing product. Follow the procedure outlined for wall-wall joints and corners.

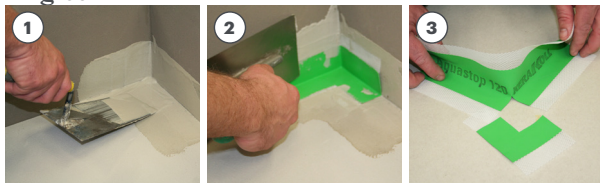
Instructions for use

→ Fractionizing floor joints



- ① Apply the waterproofing product on both sides of the joint to a width that allows Aquastop 120 to be bonded.
- ② Fix the tape on the wet waterproofing product pressing down firmly; smooth to ensure total bonding of the tape being careful not to wrinkle it; press from the centre of the tape towards the outside so as not to curl the edges of the mesh strips. Ensure total coverage of the white mesh strips with the wet waterproofing product.
- ③ In the "T" junctions and in the "X" intersections provide for the overlap of Aquastop 120.

→ Angles



- ① Apply the waterproofing product to an area about 8-10 cm wide in the corner, on the floor and on the wall.
- ② Fix the special piece to the freshly laid wet waterproofing product; press down firmly to ensure total bonding of Aquastop 120; be careful not to wrinkle it. When waterproofing the joint, lay Aquastop 120 for about 5-10 cm over the special piece.
- ③ Alternatively, make special pieces on site: cut a 40 cm-long strip of Aquastop 120 and cut halfway into it, about halfway along the strip. Fold the strip in half to create an internal corner and two overlapping edges. Carefully bond the two overlapping edges with the waterproofing product. For external corners, create an "L" tape insert for overlapping. When waterproofing the joint, lay Aquastop 120 for about 5-10 cm over the special piece.

→ Laminate Extreme - Laminate Scuba - Laminate Indoor



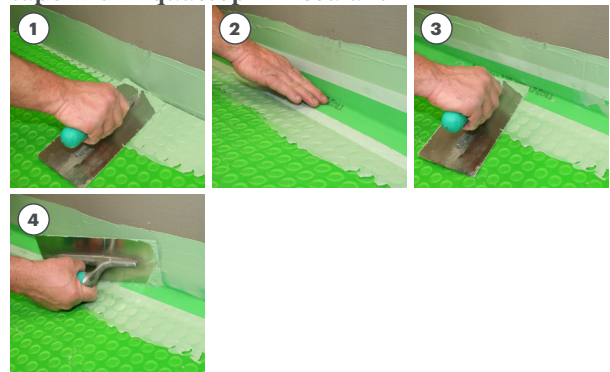
Follow the procedure outlined for bonding the Aquastop 120 tape with Aquastop waterproofing product

- ① with Aquastop Extreme in Extreme Laminate
- ② with Aquastop Scuba in Scuba Laminate
- ③ with Aquastop Indoor in Indoor Laminate

Notes

- Seal the entire perimeter and all contact points with construction elements, installations, accessories, etc.
- Use Aquastop Fix sealant or, alternatively, Aquastop Nanosil when bonding the tape on metal, plastic materials and wood in Kerakoll's Laminati systems.

→ Laminato No Crack: bonding the Aquastop 120 tape with Aquastop Fix sealant

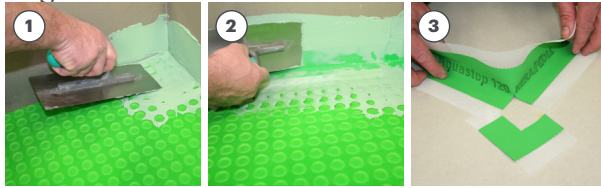


Floor-wall joints

- ① Apply the sealant to an area about 8-10 cm wide near joints, on the floor and on the wall.
 - ② Fix Aquastop 120 on the wet sealant following the wall-to-floor joint.
 - ③ Press down firmly and smooth to ensure total bonding of the tape being careful not to wrinkle it; press from the centre of the tape towards the outside so as not to curl the edges of the mesh strips.
 - ④ Ensure total coverage of the white mesh strips with the wet sealant.
- Follow the procedure outlined for wall-wall joints and corners.

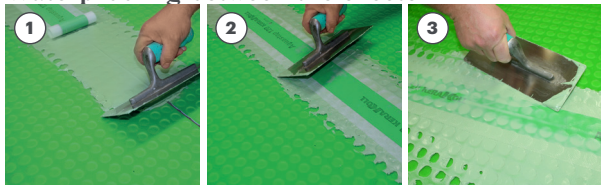
Instructions for use

→ Angles



- ① Apply the sealant to an area about 8-10 cm wide in the corner, on the floor and on the wall.
- ② Fix the special piece to the freshly laid wet sealant; press down firmly to ensure total bonding of Aquastop 120; be careful not to wrinkle it. When waterproofing the joint, lay Aquastop 120 for about 5-10 cm over the special piece.
- ③ Alternatively, make special pieces on site: cut a 40 cm-long strip of Aquastop 120 and cut halfway into it, about halfway along the strip. Fold the strip in half to create an internal corner and two overlapping edges. Carefully bond the two overlapping edges with the sealant. For external corners, create an "L" tape insert for overlapping. When waterproofing the joint, lay Aquastop 120 for about 5-10 cm over the special piece.

→ Waterproofing between the sheets



- ① Seal the longitudinal joints between one sheet and the next: apply the sealant using a smooth spreader for a width of at least 8-10 cm on either side along the joint (gap), taking care to fill in the cavities in the membrane completely.
- ② Fix the tape on the fresh sealant, press down strongly and smooth to remove any wrinkles and to guarantee total sealing of Aquastop 120; press from the centre of the tape towards the outside so as not to curl the edges of the mesh strips.
- ③ Remove any sealant that may have seeped out and ensure total coverage of the white mesh strips with the wet waterproofing product.

→ Vapor Pro Laminate

Follow the procedure outlined for bonding the Aquastop 120 tape with Aquastop Fix sealant in Laminato Vapor Pro.



Notes

- Do not cover the tape with the sealant, to ensure that the subsequent covering applied will be properly levelled.
- Seal the entire perimeter and all the sheet-to-sheet contacts.
- Use Aquastop Fix sealant or, alternatively, Aquastop Nanosil when bonding the tape on metal, plastic materials and wood in Kerakoll's Laminati systems.

Special notes

- Where it is not possible to bond the Aquastop 120 tape, due to lack of space, it is necessary to connect the waterproofing made with Nanoflex No Limits using Aquastop waterproofing products (after the product has hardened) or with Aquastop membranes and vertical elements using Aquastop Fix sealant (walls, undersills, drains, profiles, channels, down spouts, through elements, installations, etc.). Take good care when cleaning, applying and smoothing as waterproofing is subject to perfect joint filling between the waterproofing product and the element to be connected and to the perfect
- adhesion of the sealant. Liberally apply the sealant and smooth over in order to guarantee perfect joint filling and high levels of adhesion; remove any excess. A second application in order to guarantee total sealing is recommended when the first one has dried. Follow the same procedure. Aquastop Nanosil sealant can be used as an alternative to Aquastop Fix. In both cases and at floor-covering level, all seals must be covered by elastic sealing using Silicone Color or Neutro Color.
- Always provide the tapes with a heavy coating to protect them from direct sunlight and abrasion.

Certificates and marks



Technical Data compliant with Kerakoll Quality Standard	
Appearance	green tape
Shelf life	unlimited
Pack	50 m rolls
Nature of material	thermoplastic NBR
Thickness	≈ 0.6 mm
Weight	≈ 60 g/m
Section width	≈ 25-70-25 mm (mesh/NBR/mesh)
Internal corner width	≈ 100 mm
External corner width	≈ 75 mm

Values taken at +23 °C, 50% R.H. and no ventilation.

Performance		
HIGH-TECH		
Elongation at break:		
- longitudinal	≈ 25%	
- transversal	≈ 230%	
Resistance to the pressure of water	≤ 3 bar	
Maximum tensile strength:		
- longitudinal	> 4.1 N/mm²	
- transversal	> 9.4 N/mm²	
Vapour permeability μ	8400	
Tensile strength after 28 days with Nanoflex No Limits:		
- joint-substrate	> 1.0 N/mm²	EN 1348
- joint on joint	> 1.0 N/mm²	EN 1348
Tensile strength after 28 days with Aquastop Indoor:		
- joint-substrate	≥ 1.0 N/mm²	EN 1348
- joint on joint	≥ 1.0 N/mm²	EN 1348
Tensile strength after 28 days with Aquastop Extreme:		
- joint-substrate	≥ 1.5 N/mm²	EN 1348
- joint on joint	≥ 1.5 N/mm²	EN 1348
Tensile strength after 28 days with Aquastop Fix:		
- joint-substrate	≥ 1.6 N/mm²	EN 1348
- joint on joint	≥ 1.6 N/mm²	EN 1348
Tensile strength after 28 days with Aquastop Scuba:		
- joint-substrate	≥ 1.0 N/mm²	EN 1348
- joint on joint	≥ 1.0 N/mm²	EN 1348

Values taken at +23 °C, 50% R.H. and no ventilation.

Warning

- Product for professional use
- abide by any standards and national regulations
- protect the tape once laid from being damaged at the building site
- in the event of joined tapes, lay floor paving and covering joints on the same axis as the joints on the tape
- where jointing operations involve corners, edges, pipes and drains, use special connection sections
- sections of tapes to be joined must be perfectly clean and dry
- protect from direct sunlight and abrasion even after application
- if necessary, ask for the safety data sheet
- for any other issues, contact Kerakoll Technical Customer Service: + 39 0536.811.516 www.kerakoll.com/contatti



The Rating classifications refer to the GreenBuilding Rating Manual 2012. This information was last updated in January 2025; please note that additions and/or amendments may be made over time by KERAKOLL SpA; for the latest version, see www.kerakoll.com. KERAKOLL SpA shall therefore be liable for the validity, accuracy and updating of information provided only when taken directly from its institutional website. The technical data sheet given here is based on our technical and practical knowledge. As it is not possible for us to directly check the conditions in your building site and the execution of the work, this information represents general indications that do not bind Kerakoll in any way. Therefore, it is advisable to perform a preliminary test to verify the suitability of the product for your purposes.